



Username or email

Log in



Back

Aurora PC Tech

We thank you for your continued business.

We are looking forward to helping you with your technology questions.

Attention players, would you please stand up.



Would you like to play Octoπ Game?

3.141592653589793238462643383279502884197169399375105820974944592307816406286



Three provisions:

- (1) Players must compete in the game,
- (2) Players will be terminated if they stop competing in the game.
- (3) The games can be terminated if a majority of the players agree.

Stay standing if you agree!

Terms and Conditions.

Players will be terminated and must sit down when they do not have a correct answer.



**Attention players, it is now
time to play the first game!**

Maybe we will start with

Red Light, Green Light!

What IT Service do you use to create a clone of your hard drive?

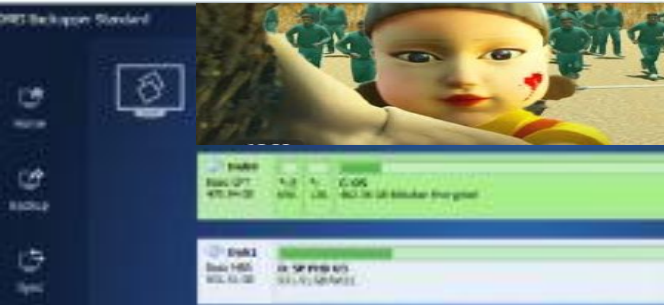


Even better, we are looking for a service that can clone over your Windows installation with all of your preferences and settings.

Which software do you use which provides a one-to-one clone of your hard drive ready for backing up or transferring data.

Which software do you use that can clone over your Windows installation with all of your preferences and settings to a larger HDD or SSD?

You have 5 seconds to provide an answer or you will be eliminated!



(Answer: Disk clone)

e to your

A problem
computer.

If Paramet
must not c
is usually
before fre

If Paramet
with a u

Technical

*** STOP: *

Beginning
ical m

Contact yo
assistance



is she

een?



Question: A 2012 report found that 83% users of which social media channel were women?

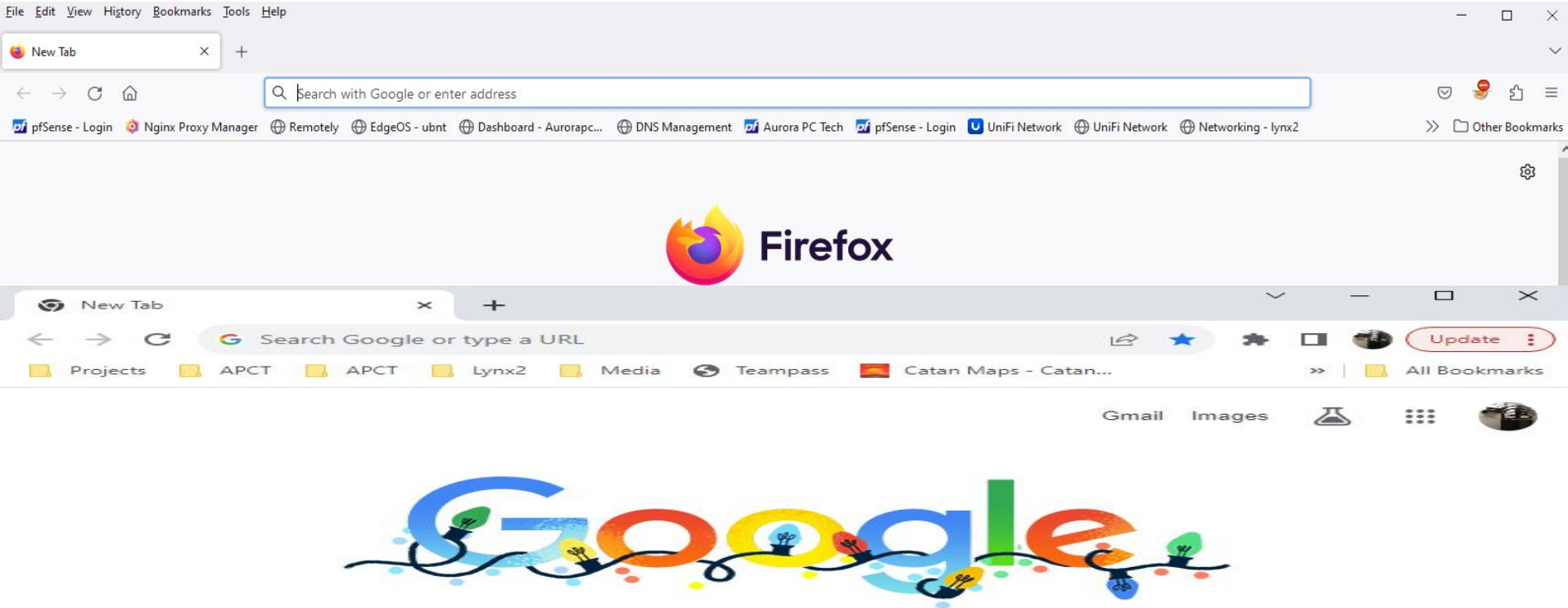


Answer: Pinterest



_____ is a Computer program that enable the users to access, navigate, and search websites.

(Answer: Browser)





(also called web
, browser _____, or
all blocks of data
r while a user is
d placed on the user's
ce by the user's web

browser.

Answer: cookies

The cache and cookies should be cleared regularly for several reasons. Depending on your settings, the cache can grow quite big, use a lot of disk space on your computer and **cause slow web browsing**. The cache can also **cause issues when viewing new versions of previously visited web pages**.

Aurora PC Tech
Support Portal

- Home
- Remote Control
- Downloads
- Scripts
- Device Details
- User Options
- Admin
 - Organization
 - Branding
 - API Keys
 - Server Logs
 - Server Config

Does Aurora PC Tech offers Remote Monitoring Services?



Answer. HECK YEAH!!!



BUBBA

User	deangelo
Platform	Windows
Disk	53 %
Memory	58 %

KITKAT

User	
Platform	
Disk	
Memory	

WIN2K12R2

User	
Platform	Windows
Disk	49 %
Memory	5 %

Terminal

Quick Scripts



The phone has started to ring. Which player will pick up?
Which router command is used to identify traffic bottlenecks between two points?



Trace

- B) SSH
- C) Ping
- D) Telnet
- E) Debug



may now



Question: Alphabet Inc owns which tech giant?

Alphabet




Answer: Google



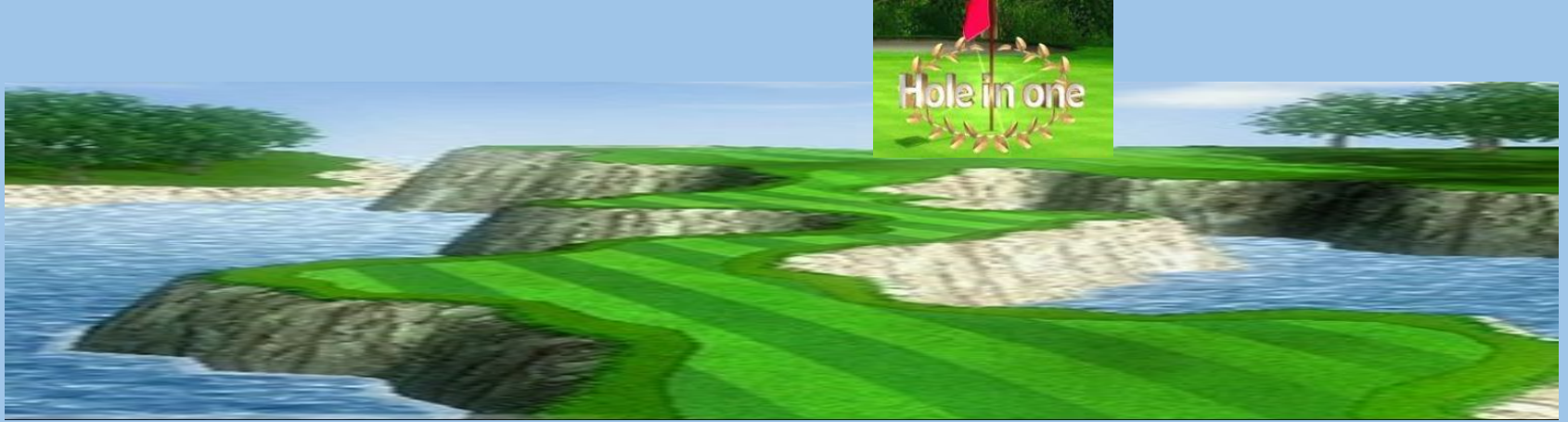
Question: A number given to each computer connected to a network?

Answer: IP Address

Wireless LAN adapter Wi-Fi:



```
Connection-specific DNS Suffix . :  
IPv6 Address. . . . . :  
Link-local IPv6 Address . . . . . :  
IPv4 Address. . . . . : 192.168.68.123  
Subnet Mask . . . . . : 255.255.255.0  
Default Gateway . . . . . :  
192.168.68.1
```



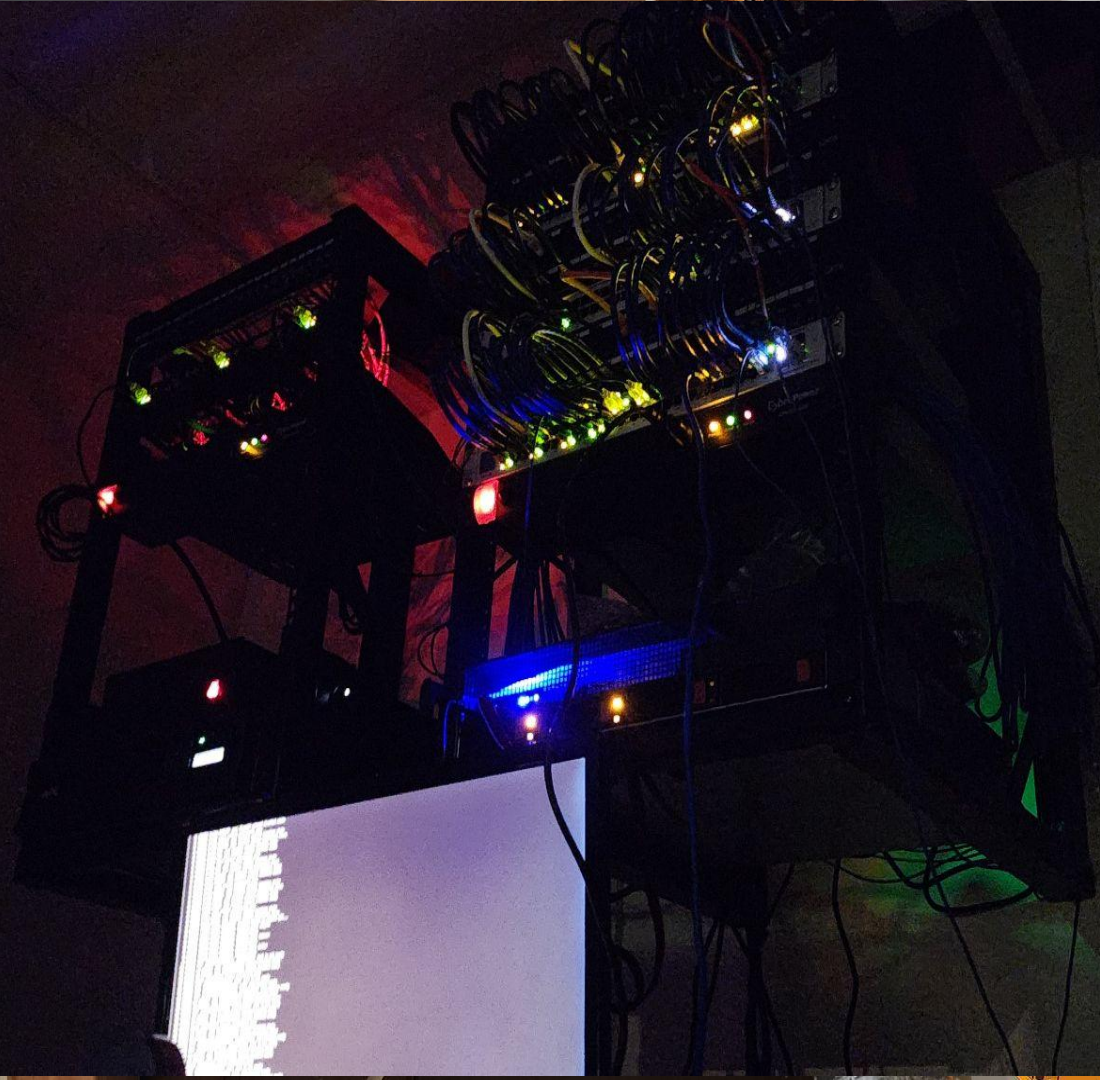
Question. What 2006 home video game console pioneered the use of motion sensors?

(Answer: Wii)



**Please choose a captain from your table.
You have 30 seconds to choose a representative.
The captain will then be the one to provide the following answers.**





Time has expired, Captains you will now answer questions one at a time. If you do not provide the correct answer your team will be eliminated. You may consult your table for the answer. You have 5 seconds to answer



What programming language is named after a type of Indonesian coffee?

(Answer: Java)



Java™

Question: Life's Good' is the slogan of which tech company?

Answer: LG



LG Corporation, formerly known as Lucky-Goldstar, is a South Korean multinational conglomerate founded by Koo In-hwoi and managed by successive generations of his family. It is the fourth-largest chaebol in South Korea. Its headquarters are in the LG Twin Towers building in Yeouido-dong, Yeongdeungpo District, Seoul.



, but only if you answered correctly



Question:

Who is the founder of Microsoft Corporation?

Answer: Bill Gates



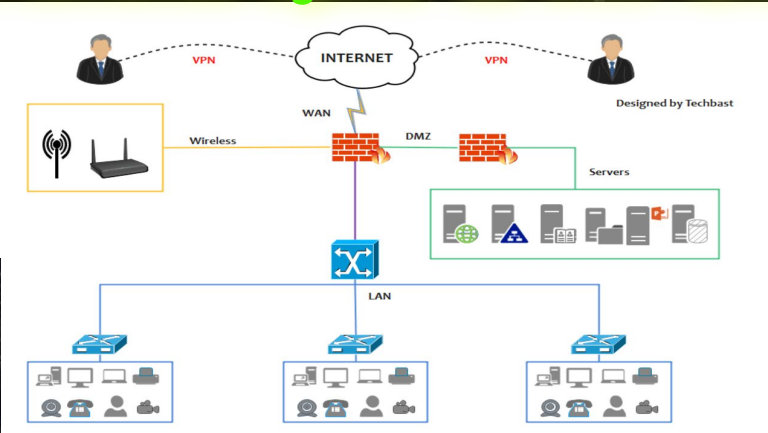
Question: What college did Bill Gates graduate from?

(Answer: None)

What product did Amazon first start out selling?

(Answer: Books)

Question. What is called a collection of computers, printers, servers, WAP(Wireless Access Points), and other devices all connected together has which name



(ANSWER: Network)



```
[root@server ~]# ip netns exec [redacted] cat /etc/passwd
```

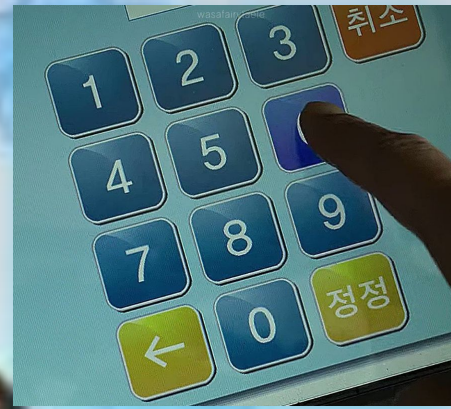
```
[root@server ~]# ip netns exec [redacted] cat /etc/passwd
```

```
[root@server ~]# ip netns exec [redacted] cat /etc/passwd
```

Device	US-48-750W #49
Port	49
Ethernet	10 GbE
Down Pkts / Bytes	713,451,372 / 693 GB
Up Pkts / Bytes	409,553,054 / 344 GB

Building your Networks from the ground up

What does PIN stand for?



(Answer: Personal Identification Number)

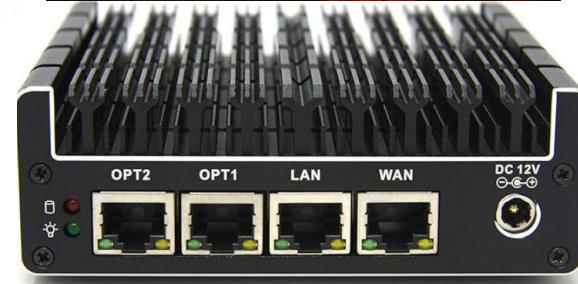


Wired _____connections offer greater reliability, speed, and security compared to Wi-Fi. They are ideal for tasks that require consistent and fast data transfer, such as online conferencing and streaming high-definition video content or large files.

Answer: Ethernet

A barrier between your computer and the rest of the internet has which name?

Answer: Firewall



Private network



Question: A large computer where files are stored centrally has which name?

Answer: Server



Attention Players

The next game will begin momentarily.

Choose a partner for the next game.

Who ever answer the question first will move on to the next round.

If you answer correctly first your teammate will be eliminated.

Else answer incorrectly your teammate will move on to the next round and you will be eliminated.





Please choose

Left

Right

Question: A network of computers limited to one company has which name?

Intranet

Local Area Network

Left

Right

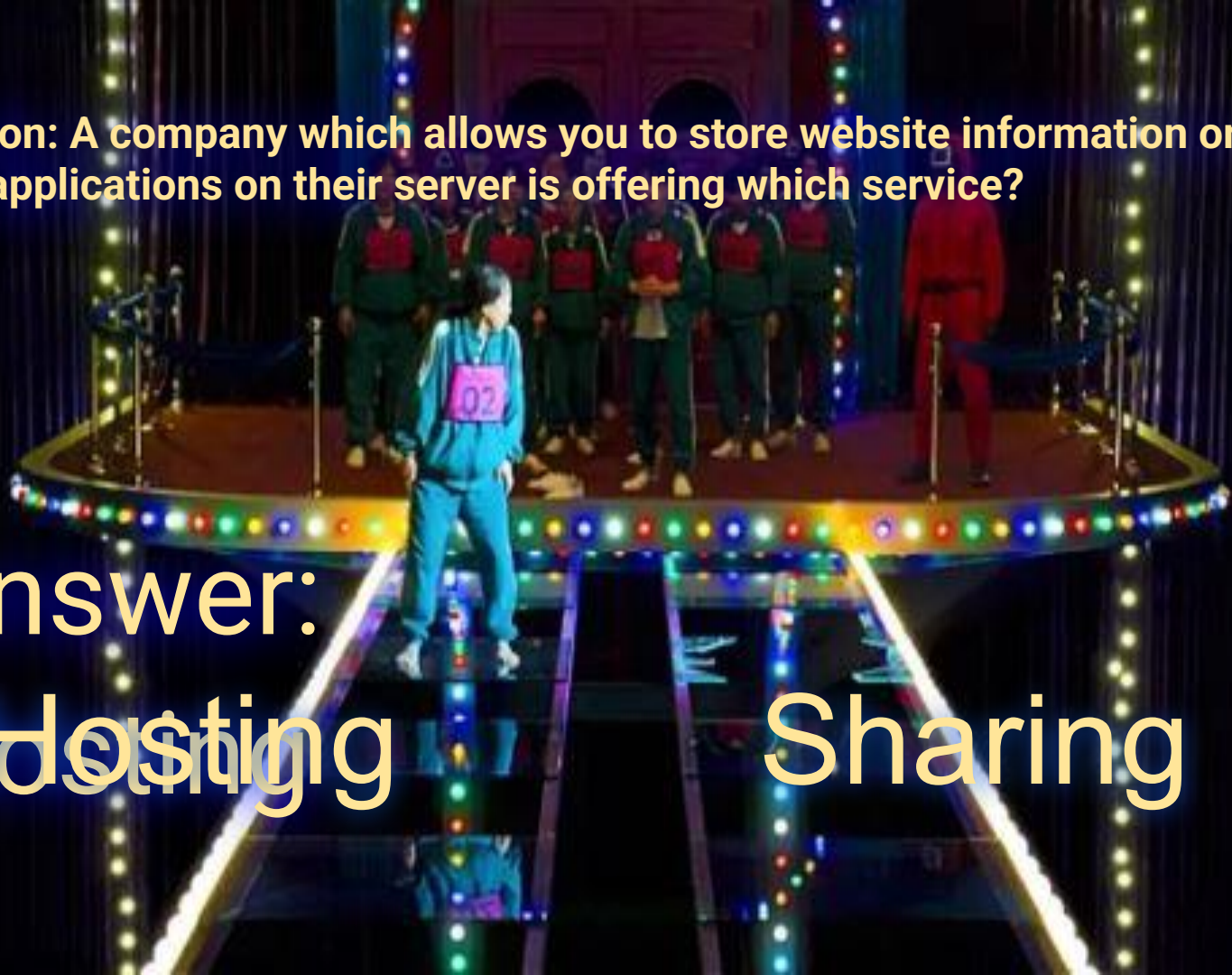
Answer: Intranet

Question: A company which allows you to store website information or other applications on their server is offering which service?

Answer:

Hosting

Sharing



What was the most downloaded app of the 2010s?



YouTube



Facebook

(Answer: Facebook)

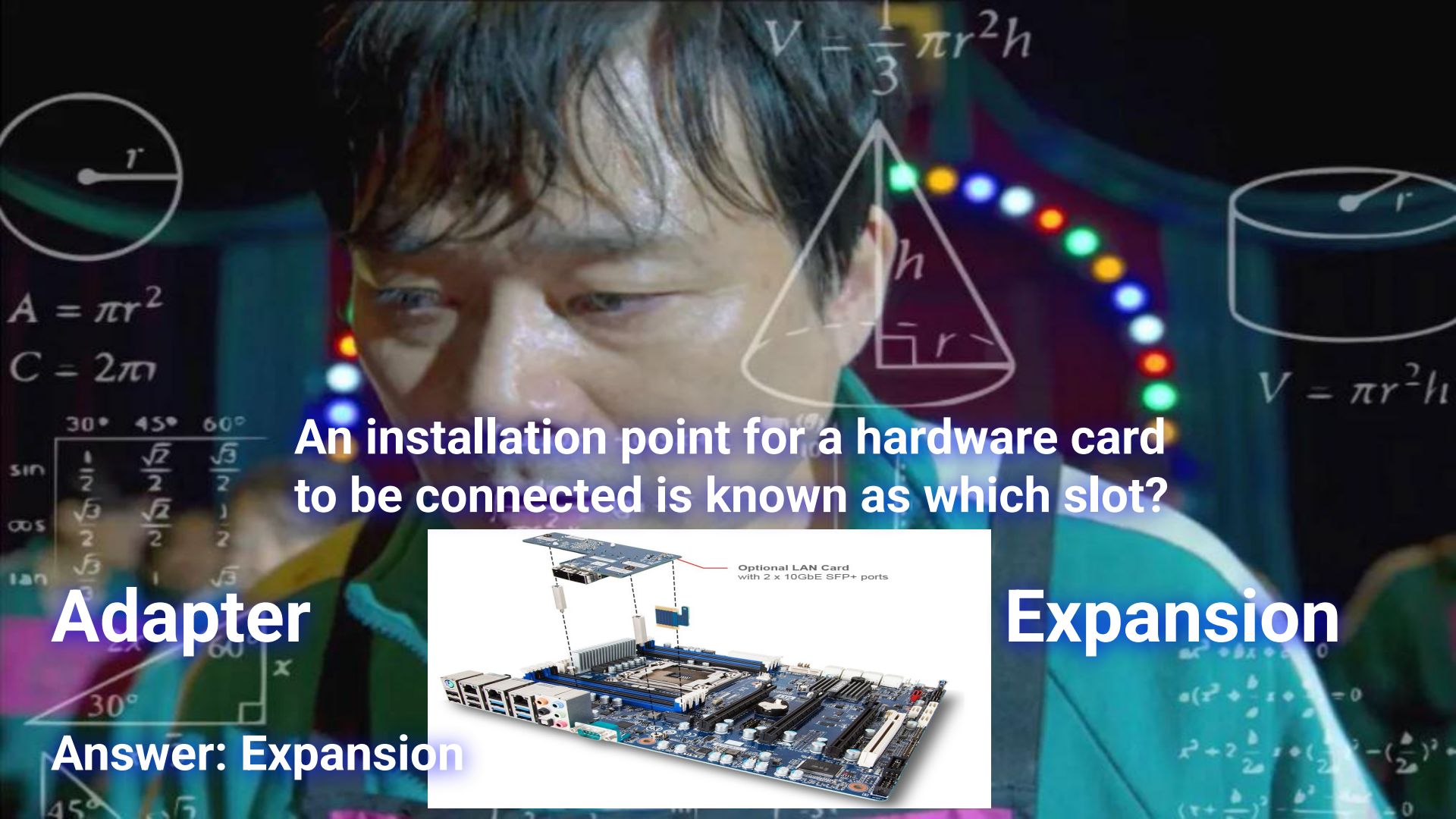
A person wearing a green and red outfit is climbing a structure made of colorful lights at night. The structure consists of several vertical and diagonal poles with strings of lights in various colors (red, green, blue, yellow) attached to them. The background is dark, and the lights create a vibrant, festive atmosphere.

Question: "An older phone which doesn't offer smartphone features has which name?"

Cellular

Dumb

Answer: Dumb

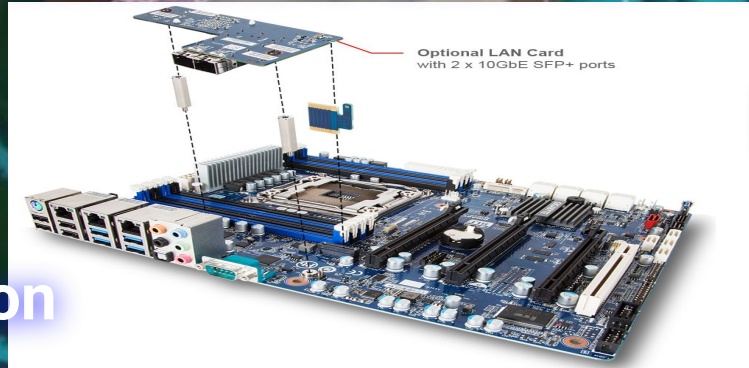


An installation point for a hardware card to be connected is known as which slot?

Adapter

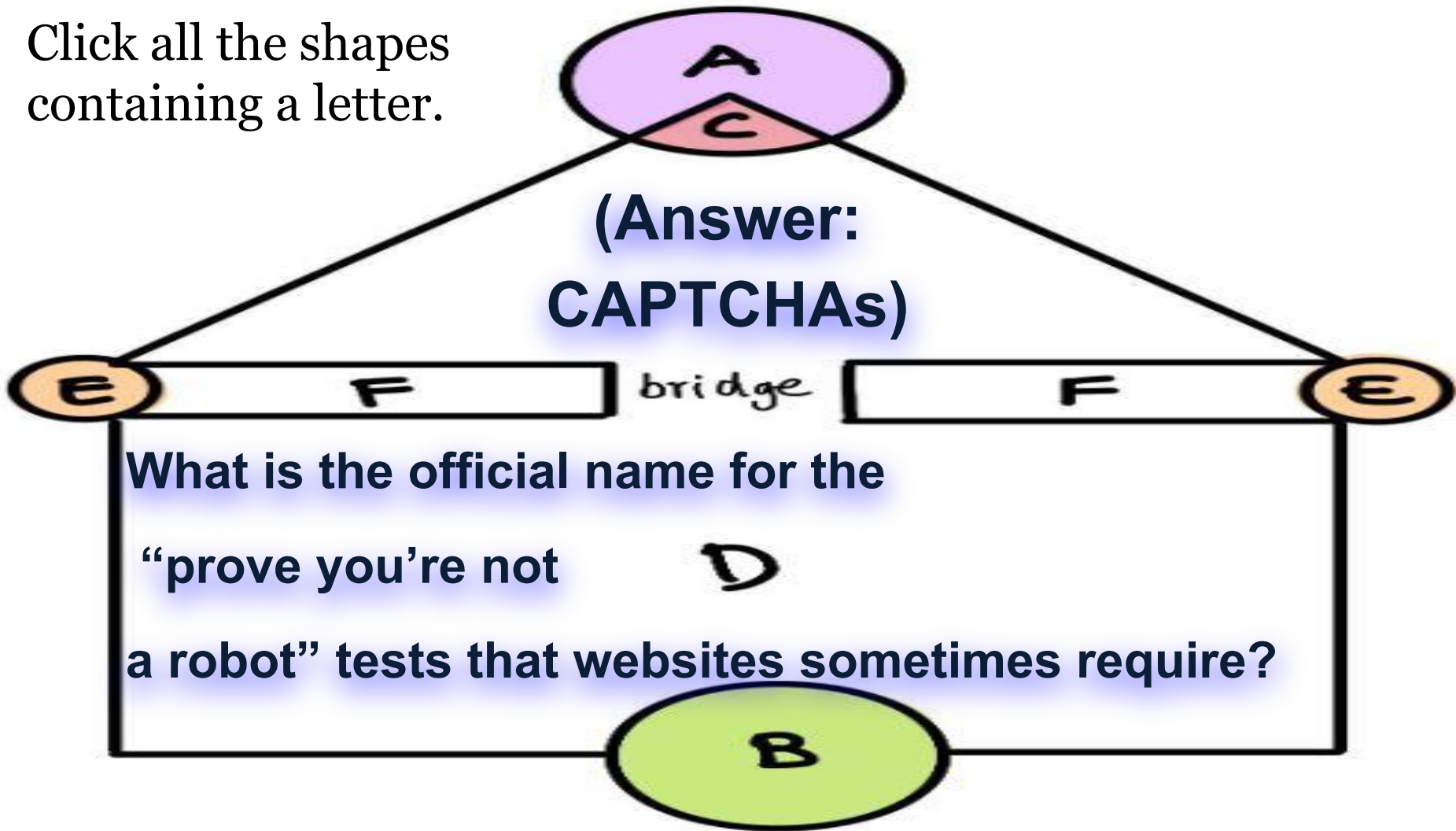
Expansion

Answer: Expansion



Click all the shapes containing a letter.

(Answer:
CAPTCHAs)



Which of the following are not a service offered by Managed Service Providers (MSPs):

- A) Will buy you new additional hardware.
- B) Network monitoring
- C) Security
- D) Virtualization
- E) Disaster Recovery
- F) Remote Support
- G) Application and infrastructure management to provide connectivity
- H) None of the above services
- I) All of the above

Answer: A

The client is responsible for purchasing recommended hardware when needed.

A coil of wire wound around a soft iron or steel core forms the basis of what?

(Answer: An Electromagnet)



What software development hosting company has an Octocat for the logo?

(Answer: Github)

Initially the logo's designer Simon Oxley thought about calling his creation 'Octopuss' (combination of octopus and pussycat) to represent how complex code combines can create peculiar things.

Why does GitHub use a cat?

The Cat Logo

By that time the founders had acquired the image of a cat-headed octopus from its creator the graphic designer Simon Oxley to use it for their mascot logo. The character's name was Octopuss. GitHub renamed it to Octocat and registered the mascot and the new name. Jul 20, 2023

In Charles Dickens' *A Christmas Carol*, what was the first name of Scrooge?

Answer: Ebenezer



Greg Smith

720.477.0013

<https://aurorapc.tech>

Wishing you **Aurora PC** Merry Christmas!

